

inView Detect

Deter crime and anti social activity with the latest rapidly deployable, cutting-edge, portable protection device



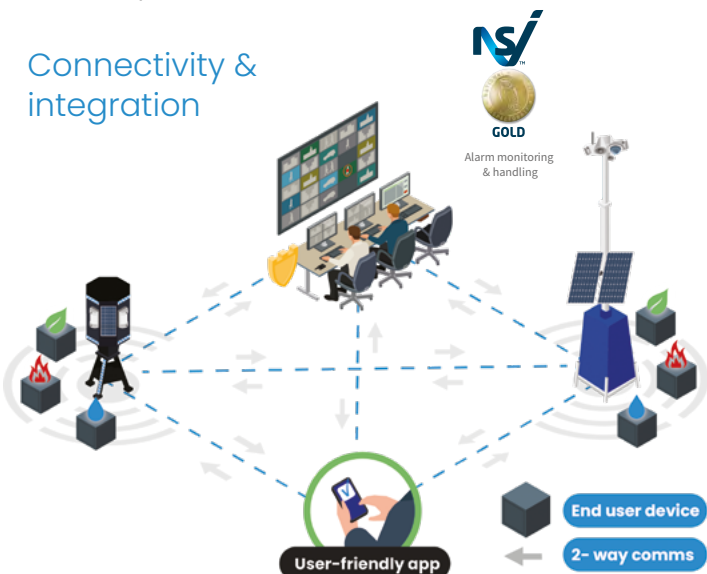
Solution overview

inView Detect is an autonomous intrusion detection system utilising battery and solar power that facilitates rapid deployment, combined with simplistic set up, to a wide variety of applications such as construction sites, vacant properties, land, plant and machinery, and areas requiring immediate security cover.

Designed specifically with ease of deployment in mind, this portable security solution offers full 360° coverage and can be armed and disarmed remotely via a user-friendly app or scheduling tool, or locally with optional fob or keypad. If activations occur, then all alerts are verified through the integral AI system and our NSI GOLD CAT II Alarm Receiving Centre (ARC) to ensure that any alarm activation protocols are instantly followed, whilst also providing all site specific information.

inView Detect forms part of the Clearway range of security technology solutions and can be easily connected to and operate in conjunction with our inView CCTV Tower solution, offering further resilience, protection and data.

Connectivity & integration



Why inView Detect?

- ✓ Full 360° coverage
- ✓ Photo on demand and by scenarios
- ✓ Digital algorithm for filtering false alarms
- ✓ Integration with additional sensors such as smoke/heat/water detection & environmental sensors
- ✓ Lightweight, rapidly deployable with simple setup
- ✓ Android and IOS APP management
- ✓ Recycled and sustainable material



The system can be easily and rapidly deployed around an ever-expanding site where potential obstructions to line of sight and risks change on a daily basis. This means additional units can be added without the need, cost or risk of lengthy cable runs.



Additional key features

- Built-in tampering alarm
- IP55 waterproofing
- Anti-masking system
- Geofence - reminder function for notifying the user of arming and disarming of the inView Detect system when a user-defined boundary is crossed
- 3-year battery life
- High visibility
- Resists heat up to +60°C and withstands cold down to -25°C
- Two-way encrypted communication using GSM or ethernet to send alarms to the central monitoring station/client
- Checks the functionality of detectors at least every 12 seconds
- Ruggedised and sustainable manufacture
- Programmable up to 5 images (by alarm, on demand, by scenario)
- Links to up to 199 other devices
- 1700m range to other devices with option to extend to 2000m
- Animal immunity up to 80cm tall

Integration options

The inView Detect solution can integrate with a number of other devices across a site or property to offer a wider range of asset protection, including:

- Fire detection
- Smoke detection
- Panic alarm
- Flood detection
- Water flow detection
- Room air quality
- Other relay-controlled devices
- Additional stand-alone devices such as individual cameras and scaffolding alarms



Example applications



Vacant property



Construction sites



Highways



Rail



Utilities sites



Car parks



Public events



Power stations

RAPID RESPONSE

The R.M Security team can provide the inView Detect system to help you in emergency situations.

Whether short-term interim measures to defend premises or assets following a break-in, or a permanent installation to mitigate an ongoing safety threat.





Intelligent detection

inView Detect has four sensors, the signals of which are analysed by a two-step LISA algorithm. When motion is detected, LISA performs correlation and spectral analysis of the signals, helping to instantly differentiate real threats from interferences.



Correlation analysis:

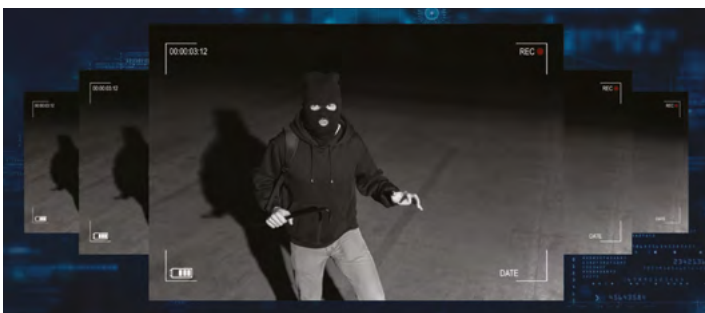
Whenever the device detects motion, LISA analyses and compares signal forms from the two sensors in real-time. If forms are similar, the alarm is activated.

Spectral analysis:

When both sensors detect motion, but the correlational analysis doesn't identify enough similarities, LISA compares frequency components in the signals of both sensors.

Photo verification

inView Detect is equipped with four HDR cameras to rapidly assess the on-site situation, wherever it is positioned. The detector takes up to five photos as soon as it detects an intrusion into the monitored area. The series of photos combined becomes an animation that shows the situation development in the dynamics.



Photos can be triggered by alarm or on demand with a camera that combines the best optics, fast processor and advanced software algorithms. This guarantees top quality pictures in any weather, day or night.

Photos are protected at detector, system and app level so they can only be viewed by authorised individuals.

Remote surveillance

The system enables users and monitoring station operators to see immediately whether an alarm is genuine, so they can respond accordingly. Those responsible for the system can also check what is happening on site at any time using a simple app. On opening the app, the user selects the detector, and will see the live situation in a few seconds.



Geofence alerts

User-friendly app for remote access and control, complete with Geofence, an indispensable reminder function for notifying the user of arming and disarming of the inView Detect system when a user-defined boundary is crossed.





Technical information

Specification	
Tilt detection	Yes
Cameras	4 fixed HDR cameras with 15m range in each direction
Alerts	Audible and visual alerts with 120 db sounder and blue LED lights
Detection	Intelligent alarm filtering, anti-masking, and animal immunity
Geofence	Yes
Ruggedised build	IP devices and build
Arm/Disarm	4 options - app, fob, keypad and schedule
Range extender option	Up to 2000 meters
Remote control	Yes
Remote commissioning	Yes
Anti tamper	Yes
Solar panel supported	Yes x 4
Anti jamming technology	Yes
Remote battery status	Yes
Remote room/environment temperature	Yes
Mother and Child integration	Yes - links up to 199 additional devices
Back light cameras for poor light/darkness	Yes
QR Code technology for new devices	Yes
Intelligent plugs and switches	Yes

Configurable detector ping	Yes
IP55 rated camera housings	Yes
Operational temperatures	-25°C to +60°C
Grade 2 Detection	Grade 2 EN50131
Wide Angle Lens	Yes
Infrared Filter	Yes
2 x IR LEDs	Yes
Alarm Filtering (LISA)	Live Intelligent Spectrum Analysis
Communication Protocol	Jeweller - alarms & events (encrypted)
Communication Protocol	Wings - photo verification (encrypted)

Dimensions	
Body Height (mm)	1,270mm incl. stand
Width (mm)	525mm
Depth (mm)	525mm
Weight (kg)	67.5kg incl battery

Product Supply Information	
Country of build	UK
Body Material	Polypropylene
Recycled and sustainable	Yes

**To find out how we can help
call: 07983 742 770 or email
info@rm-security.co.uk**

